

NESA Newsletter February 2019

WCPPE are continuously monitoring feedback from our users along with the statistical data around pass rates, to help us to regulate the process.

What has gone well?

Congratulations to all **2086** users who have enrolled on NESA and successfully started working their way through the NESA process completing many, if not all of the 11 generic skills and competencies modules.



**Information
Governance**

99%

passed*

1885 attempted



IQT

99%

passed*

3760 attempted



Equality Act

98%

passed*

1484 attempted



**Safeguarding
Level 2**

97%

passed*

1511 attempted



**Mental
Capacity Act**

99%

passed*

1449 attempted



POVA

99%

passed*

1490
attempted

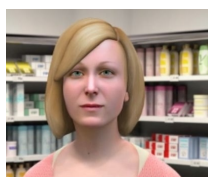


**Patient Group
Direction**

99%

passed*

1388 attempted



**MECC
Avatar**

95%

passed*

1413 attempted



**MECC
Video critique**

99%

passed*

1452 attempted

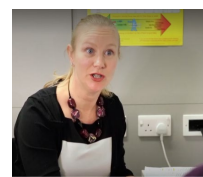


**PCC
Avatar**

92%

passed*

1466 attempted



**PCC
Video critique**

98%

passed*

1503 attempted

To date, **1185** people have passed **all generic skills and competencies assessments** and submitted their forms to shared services. We recognise that the skills assessments might not be everyone's preferred style of learning so don't forget **WCPPE are running a series of live training events if you want some support to help pass these assessments** (see website for more details).

* **The remaining % of people are still in the process of working towards a pass**

As part of our ongoing review process, it was decided back in May to temporarily suspend and revalidate the MECC video critique assessment. We are now pleased to confirm that this assessment is available again through the NESA hub for completion. In addition, we have responded to feedback from our users and as a result the assessment guidance under the learning resource tab for both MECC and PCC have been improved, to provide a more robust learning tool for these assessments.

Once all generic skills and competencies have now been completed, the automatic submission forms can be accessed and sent through to Shared Services through the NESA hub.

NESA General Information and guidance to completing assessments

Reaccreditation - It has been agreed with Shared Services that an extension for reaccreditation will be given for ALL enhanced services due to expire before 1st April 2019. It is not compulsory to fully complete all “generic skills and competencies assessments” prior to reaccreditation during this period. From 3rd April 2018 new reaccreditation forms will be available under each enhanced service for you to submit to Shared Services to reaccredit. You will however need to pass all of the ‘generic skills and competencies’ assessments by 31st March 2019 for your reaccreditation to remain in place as of 1 April 2019.

Initial accreditation - to gain initial accreditation in any enhanced service, all generic skills and competencies must be completed along with clinical knowledge assessment for the enhanced service.

Live events - WCPPE will be providing MECC/Patient Centred Consultation skills live evening, which can be accessed for those individuals who require more assistance in passing the assessments.

Do's

- **Do** read through the learning resources and assessment guidance produced for you to help enable you to pass the assessments successfully.
- **Do** print off hard copies of the guidance when attempting the consultation skills assessments to use as a reference guide.
- **Do** attempt the tutorial avatar to get used to the functionality of the avatar and how it works.
- **Do** download and print off your feedback if you fail an avatar assessment before making another attempt to help you identify where you went wrong.
- **Do** allow yourself dedicated, uninterrupted time to complete the learning resources and assessments.
- **Do** type out the full question or statement you wish to say to the avatar to allow you to pick from the most appropriate options, avoid “what, why, explain” as they will be very generic and lead you to ask a question you did not mean to ask.
- **Do** report any glitches/freezing issues with the avatar to WCPPE.

Don'ts

- **Don't** attempt the assessments in the consultation room between prescriptions. This will not fully give you the uninterrupted time you will require to complete the assessments.
- **Don't** leave the assessments until next year. The generic skills and competencies assessments MAY take longer than you think. They are likely to be new styles of assessments to everybody and so try to not underestimate how long they may take you to complete them.

All information above is available on the website under the Enhanced Services tab, including a list of FAQs which are being continuously updated.